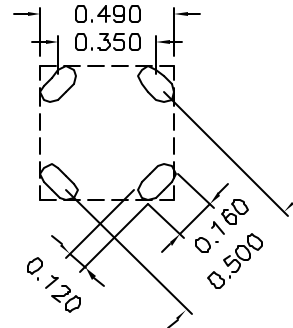
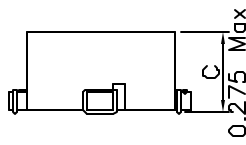
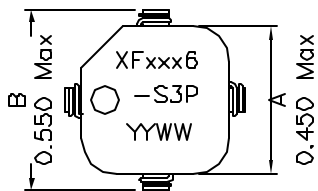


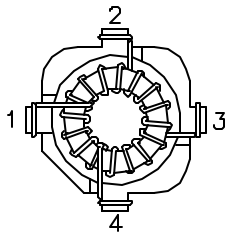
7XFxxx6-S3P SERIES INDUCTORS

- * TRUE SURFACE MOUNT DESIGN
- * ECONOMICAL, LOW COST SOLUTION TO YOUR POWER REQUIREMENTS
- * CUSTOM VERSIONS AVAILABLE AT NO EXTRA COST
- * TAPE AND REEL PACKAGING AVAILABLE, 400 PCS Per 13" REEL
- * VERSATILE DUAL WINDING DESIGN, USE AS HIGH CURRENT CHOKE OR ONE(1) TO ONE (1) TRANSFORMER
- * CONSTANT INDUCTANCE UP TO 1.0 MHz
- * Flamability Rating: UL94V-0

Mechanical Dimensions:

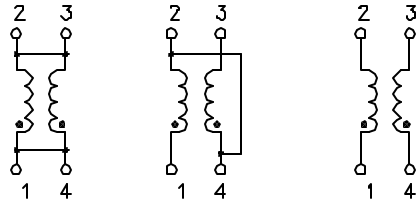


RECOMMENDED LAYOUT PATTERN
(TOP VIEW)



BOTTOM VIEW

Schematic:



PARALLEL

SERIES

TRANSFORMER

TOLERANCE:
.xxx ±0.010
Dimensions in Inch

Part Number	PARALLEL RATINGS			SERIES RATINGS		
	INDUCTANCE uH	CURRENT ADC	DCR Ohms	INDUCTANCE uH	CURRENT ADC	DCR Ohms
7XF4709-S3P	0.44	7.00	0.004	1.76	3.50	0.016
7XF6809-S3P	0.78	6.00	0.005	3.14	3.00	0.020
7XF0016-S3P	1.23	5.00	0.006	4.90	2.50	0.024
7XF0026-S3P	1.76	5.90	0.007	7.06	2.95	0.028
7XF0056-S3P	4.90	4.40	0.014	19.60	2.20	0.056
7XF0086-S3P	8.28	3.50	0.019	33.12	1.75	0.073
7XF0106-S3P	9.60	3.40	0.020	38.42	1.70	0.079
7XF0156-S3P	14.16	3.00	0.024	56.64	1.50	0.096
7XF0206-S3P	19.60	2.10	0.055	78.40	1.05	0.220
7XF0256-S3P	25.92	2.00	0.064	103.68	1.00	0.254
7XF0336-S3P	33.12	1.80	0.072	132.50	0.90	0.288
7XF0506-S3P	50.18	1.50	0.111	200.70	0.75	0.444
7XF0686-S3P	67.08	1.20	0.158	268.32	0.60	0.630
7XF1006-S3P	99.23	0.92	0.303	396.90	0.46	1.210
7XF1506-S3P	148.23	0.82	0.372	592.90	0.41	1.488
7XF2006-S3P	200.70	0.64	0.545	802.82	0.32	2.180
7XF3006-S3P	298.12	0.62	0.672	1192.46	0.31	2.687